



4MOST ↔ WAVES

Joe Liske
Hamburger Sternwarte
Universität Hamburg

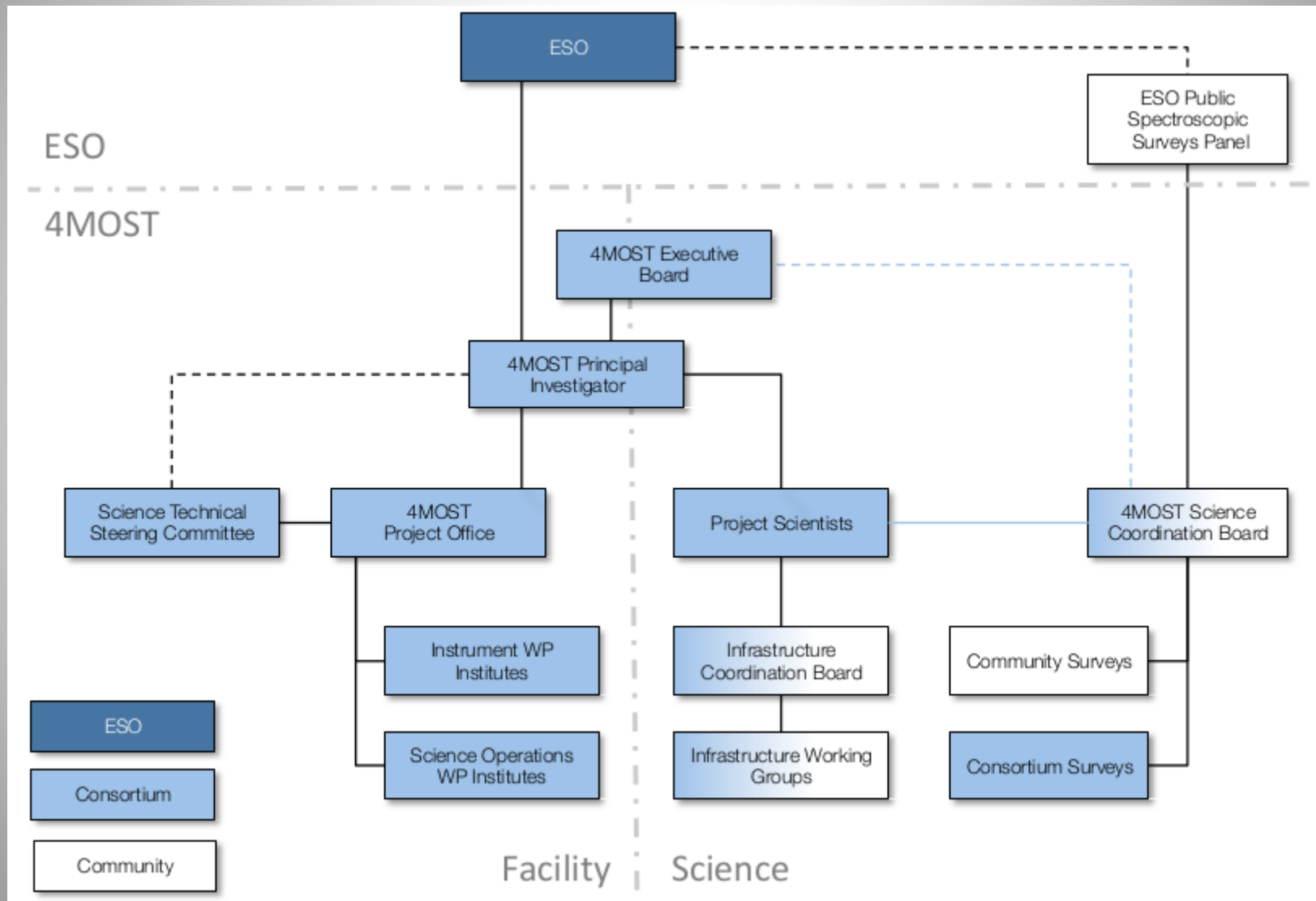
4MOST

Fo

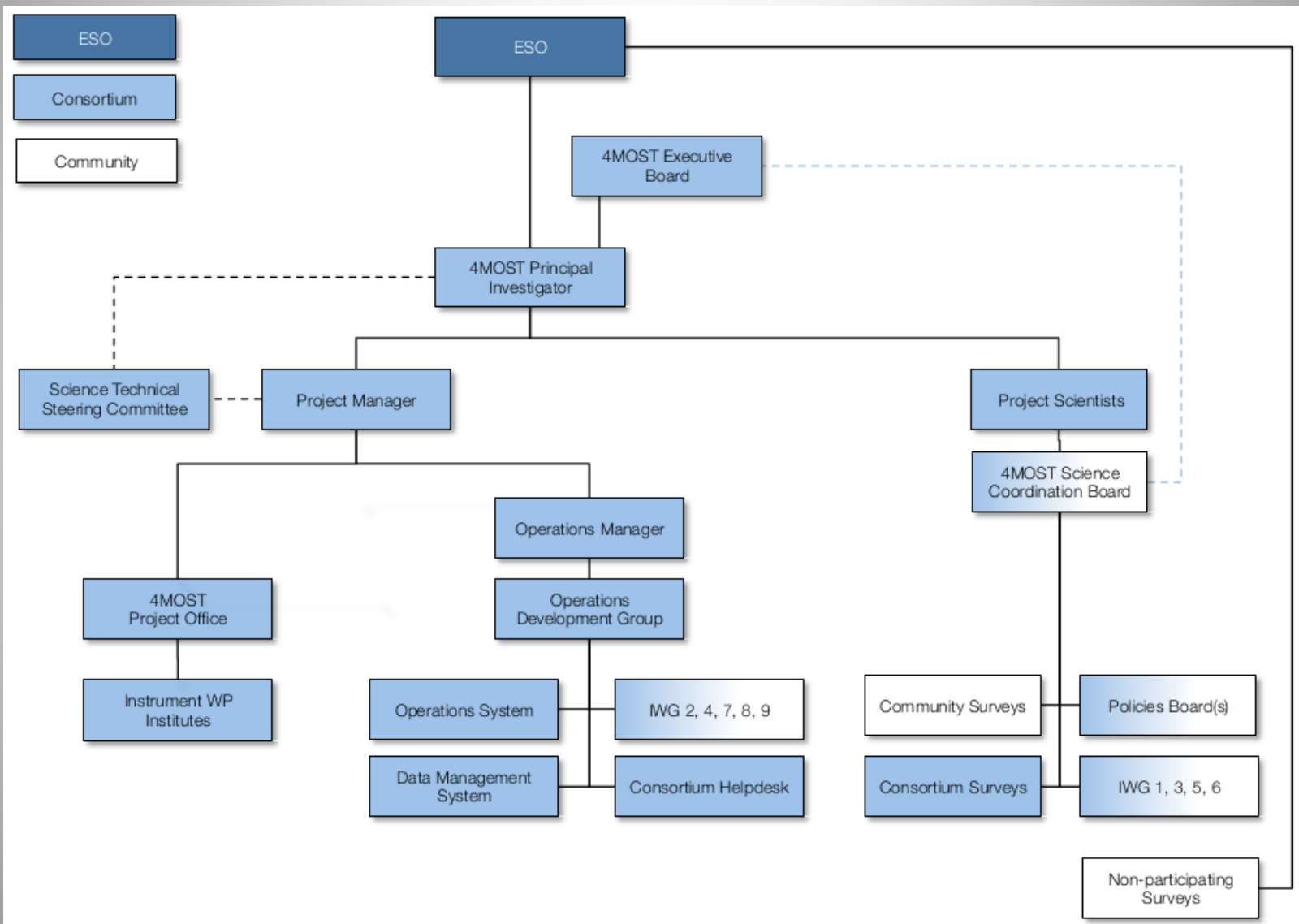
4MOST

- ◆ WAVES is not a stand-alone enterprise
- ◆ Integral part of the larger 4MOST project
- ◆ 4MOST project:
 - ◆ Construct 4MOST instrument
 - ◆ Run a Public Survey Programme over at least 5 years:
 - Currently 10 Consortium Surveys (using 70% of the time)
 - An unknown number of participating Community Surveys
 - An unknown number of non-participating Community Surveys
- Need to meet requirements coming from ESO
- Need to meet requirements coming from 4MOST
- Need to watch out whether our requirements are met by 4MOST
- Need to stick to 4MOST schedule

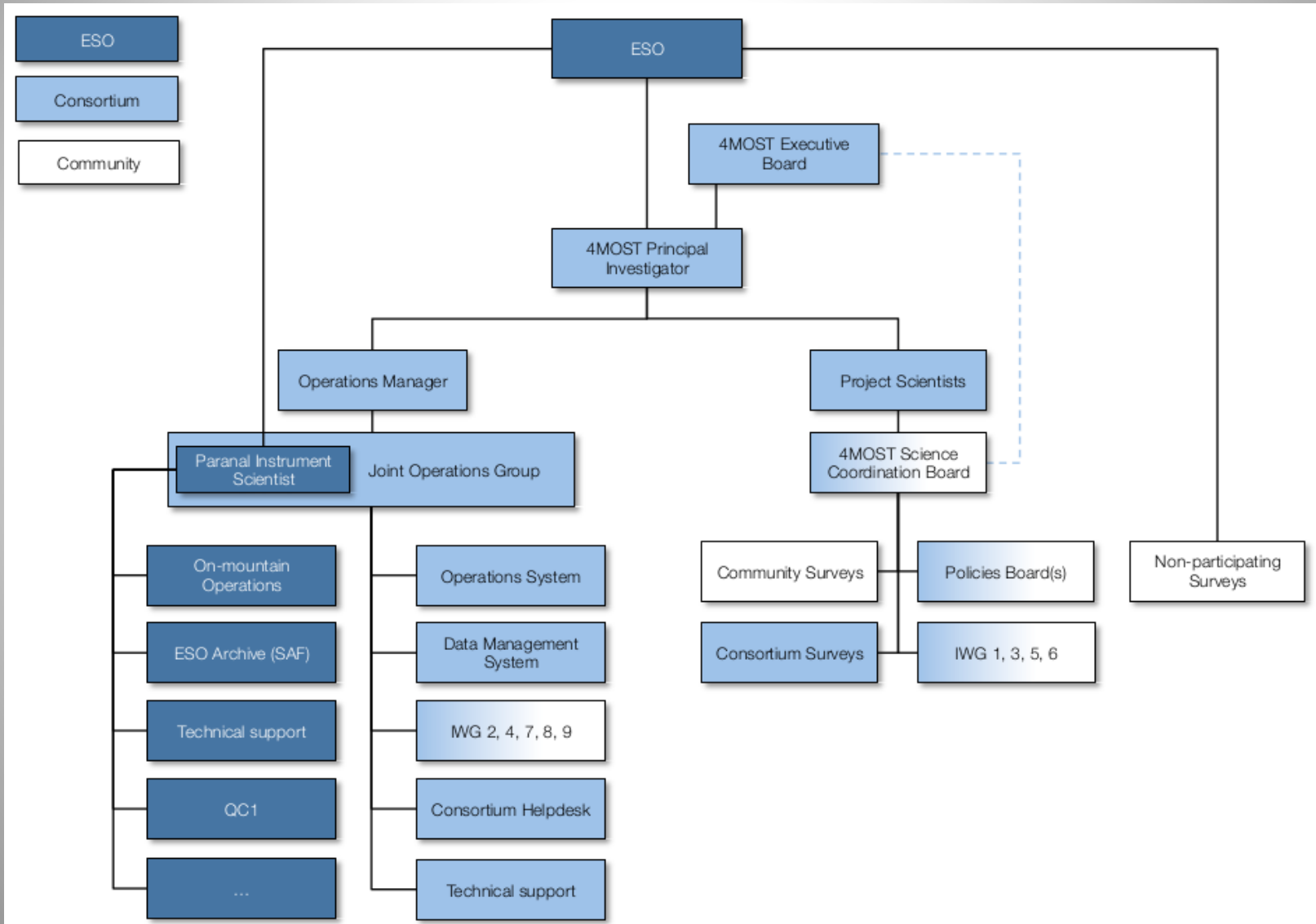
4MOST project structure: current



4MOST project structure: proposed



4MOST project structure: proposed for operations



Schedule



Planning

Development plan for Science

Document No.: MST-PLA-PSC-20100-9210-0002

Issue No.: 1.00

DocuShare URL: <https://ds-web.aip.de/docushare/dsweb/Services/Document-4414>

Prepared by	 Sofia Feltzing <small>Digitally signed by Sofia Feltzing DN: cn=Sofia Feltzing, o=Lund University, ou, email=sofia@astro.lu.se, c=SE Date: 2017.02.21 20:27:50 +01'00'</small>	2017-02-22
Approved by	<i>Sofia Feltzing (PS)</i>  Jochen Liske <small>Digitally signed by Jochen Liske Date: 2017.02.21 22:30:22 +01'00'</small>	2017-02-22
Released by	<i>Joe Liske (Chair SCB)</i>  Roelof de Jong (PI) <small>Digitally signed by Roelof de Jong Date: 2017.02.21 23:33:01 +01'00'</small>	2017-02-22

Schedule

Phase	Duration	
Phase 0	September 2016 – January 2019	Ends with the Call for Proposals Readiness Review and the publication of the White Papers, i.e., we are ready to launch the Call for Letters of Intent to the Community.
Phase 1	February 2019 – March 2021	Starts just before the Call for Letter of Intent and ends with ESO Director General approval of the 4MOST Survey Program.
Phase 2	April 2021 – September 2022	Starts with Community Surveys joining the Science Team and ends with the start of operations.
Phase 3	September 2022 –	Operations

Schedule

Table 2 Summary of Phase 0 in the Science Schedule. The descriptions given here are intentionally very short (essentially an acronym or a word). The milestones for science are described in Section 6.

Date	Milestone Description	Science Milestone
mid-2016	Start of Phase 0	
29 – 30 March 2017	DFDR	Sci:Mi 0.1
11 – 15 September 2017	AHM 2017	Sci:Mi 0.2
11 September 2017	CSP-1	Sci:Mi 0.3
July 2018	CSP-WP, SSPs & SMPs	Sci:Mi 0.4
September 2018	AHM 2018	Sci:Mi 0.5
XX December 2018	CfPRR	Sci:Mi 0.6
XX December 2018	DFDR2	Sci:Mi 0.7
XX December 2018	Publication of White Papers	Sci:Mi 0.8
31 January 2019	End of Phase 0	Sci:Mi 0.9

Schedule

Table 5 Summary of Phase 1 in the Science Schedule. The descriptions given here are intentionally very short (essentially an acronym or a word). The milestones for science are described in Section 6.

Date	Milestone Description	Science Milestone
February 2019	Start of Phase 1	
May 2019	CfLoI	Sci:Mi 1.1
September 2019	AHM 2019	Sci:Mi 1.2
November 2019	CfP	Sci:Mi 1.3
September 2020	AHM 2020	Sci:Mi 1.4
March 2021	ESO DG approval for 4MOST Survey Program, End of Phase 1	Sci:Mi 1.5

IITs (Important Imminent Things)

- ◆ Restructuring
 - ◆ Recommendation by DFDR panel
 - ◆ Need an extra 0.5 FTE to staff Operations Office
- ◆ Consolidation of Operations Requirements
 - ◆ Ops Reqs have been collected
 - ◆ Lots of inconsistent and even conflicting requirements
 - Need consolidation process, not yet started
 - ◆ Important things for us:
 - Ability to decouple on WAVES regions
 - Timescale for updating target cat with new obs
 - On-chip binning

IITs (Important Imminent Things)

- ◆ Development of Survey Strategy
 - ◆ Job of Infrastructure Working Group 2
 - ◆ Very complex problem, different from what we've done before
 - ◆ Way behind schedule
 - ◆ Roelof stepped in → Development Plan
 - ◆ Sequence of “sprints”, now started
 - ◆ These discussions should bring all of the thorny, as yet unresolved issues to the surface: scope of surveys, time counting, bright/dark time allocation, tiling, fibre assignment, priorities, on-chip binning,...
 - **EXTREMELY IMPORTANT!**
- ◆ Development of Science Team Policies
 - ◆ 4MOST Project Office happy
 - ◆ Currently under discussion by SCB (not many comments so far)
 - ◆ Covers ALL of the Science Team (including Community Surveys)
 - Needs to be negotiated with ESO (acting on behalf of Community)